

# **ASEAN INVESTMENT CHALLENGE 2025**

# **USER GUIDE**

**TRADING PLATFORM SIMULATOR**

**ELEVATE YOUR INVESTMENT RIZZ**

Supported by:



**BURSA  
MALAYSIA**



**SGX Group**



**PSE**

**Nasdaq**

*In this simulated market, all trades will be executed regardless of order size.  
In real world trading, various financial risks must be considered before investing.*

## Contents

1.	Login .....	3
	Set up PIN code .....	4
	Forgot password.....	5
	Reset PIN code .....	5
2.	What is offered on the trading Platform? .....	6
3.	Account Set up .....	7
4.	Market Overview .....	7
5.	Charts .....	7
	Setting Price Alert .....	8
6.	Watchlist.....	8
7.	Market hours .....	9
8.	Where to find stocks?.....	9
	Thailand stocks (SET)* .....	10
9.	Place order .....	11
10.	Stop-Loss .....	13
11.	View orders .....	13
12.	Portfolio Summary .....	14
13.	Portfolio Holdings .....	14
14.	Theme .....	14
15.	Platform Support.....	15

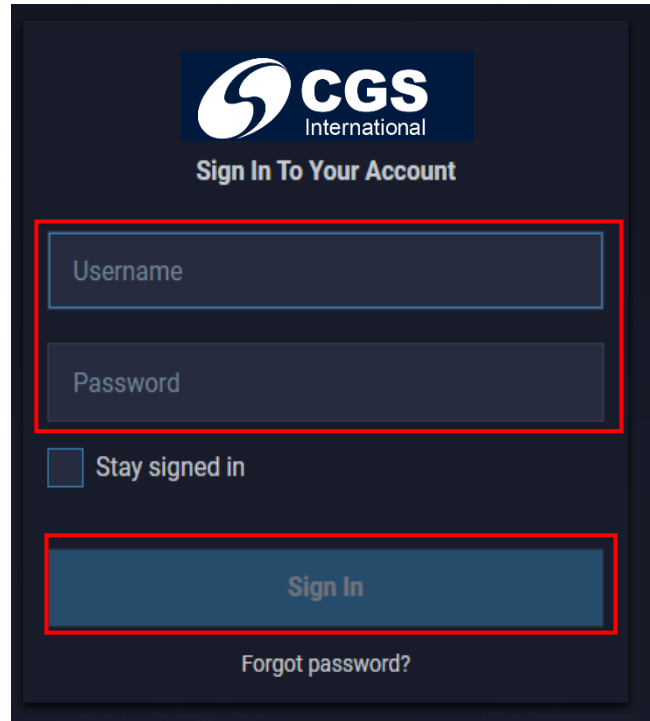
## 1. Login

- Trading platform URL: <https://ic.cgsi.com/>
- You can log in to the trading platform using:
  - a. Username
  - b. Password

which has been created as part of the registration process. You may refer to the welcome email for the username.

Subsequently, you will be receiving your password from a 2<sup>nd</sup> email titled **“ASEAN Investment Challenge – Your Journey Begins Here”**

- “Stay signed in” will remember your login credentials for subsequent login.



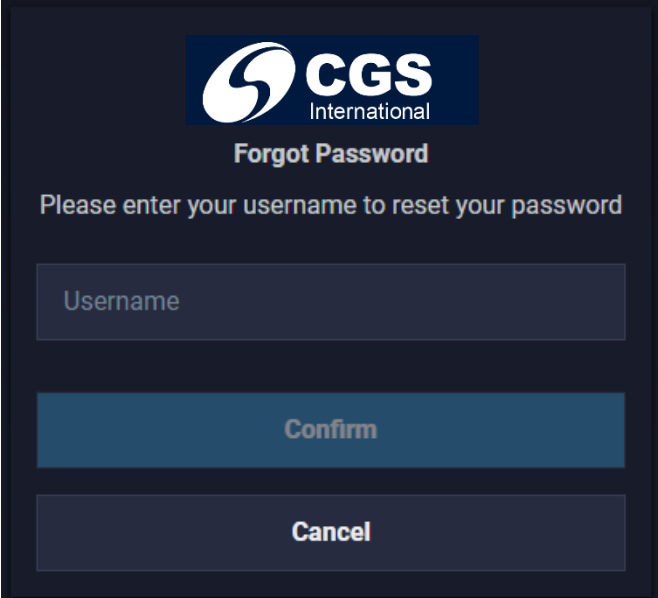
The image shows a login interface for CGS International. At the top, the CGS International logo is displayed, followed by the text "Sign In To Your Account". Below this, there are two input fields: "Username" and "Password", both highlighted with a red border. Under the "Password" field, there is a checkbox labeled "Stay signed in". At the bottom of the form, there is a large blue button labeled "Sign In", also highlighted with a red border. Below the "Sign In" button, there is a link that says "Forgot password?".

### Set up PIN code

- You will be asked to set up a 6-digit PIN code.
  - You will be asked to confirm the PIN code value.
- This would be required for every login session.
- Once PIN is successfully set up, you will be redirected to the trading platform.

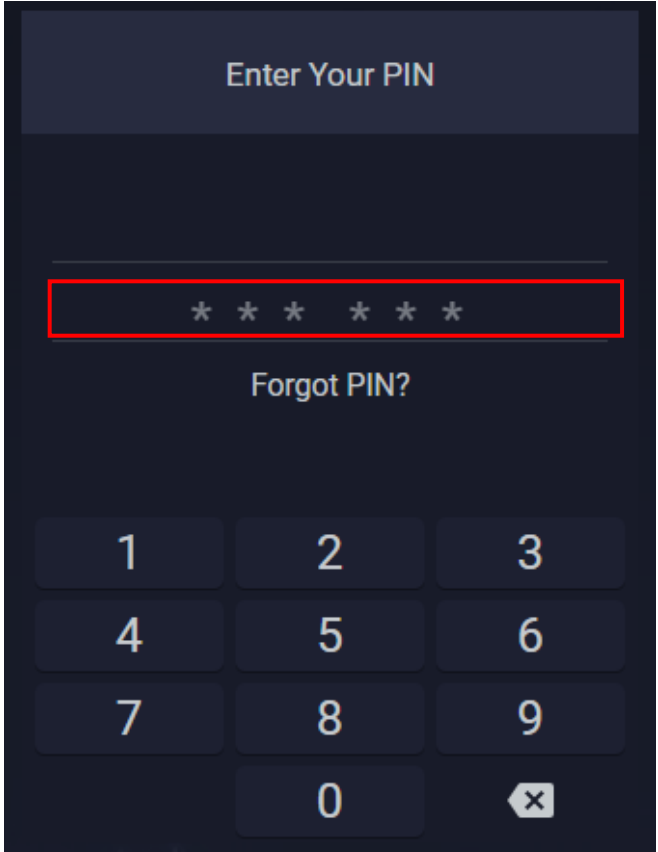
### Forgot password

- You may reset your password by clicking on “Forgot password?” at the login screen
- You will need to key in the Username that you have created during the registration process.
- SMS OTP will be prompted to the Team leader’s mobile number.
  - You can request a new OTP after 1 minute.
- Once SMS OTP is successfully authenticated, you will be able to reset your password.
- **Password criteria:** *Your password must include 8-25 characters and contain at least one lowercase, one capital letter and one number.*



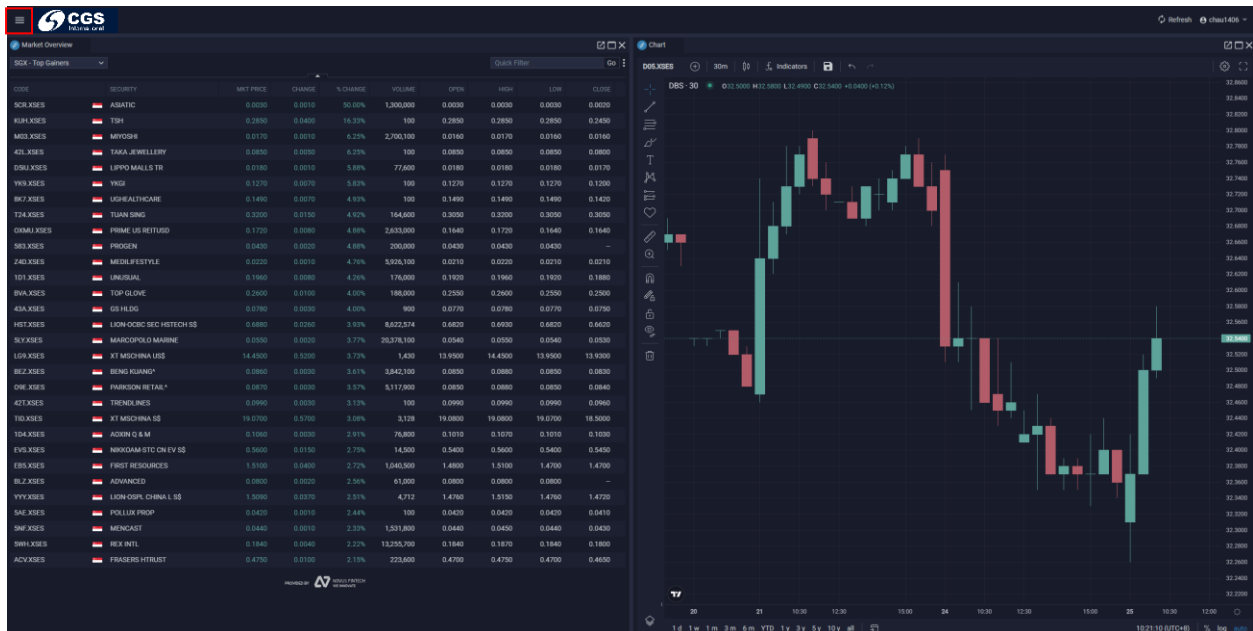
### Reset PIN code

- You may reset your PIN by clicking on “Forgot PIN?” at “Enter Your PIN” page.
- You will need to key in the password.
- Once password is successfully authenticated, you will be able to reset your PIN.



## 2. What is offered on the trading Platform?

- Upon login, you will see:
  - Market Overview
  - Chart of respective instrument.
- You can view all the available menu:
  - Market Analysis
    - Market Overview
    - Chart
  - Trading
    - Orders
    - Security Detail
    - Watchlists
  - Portfolio
    - Portfolio Holdings
    - Portfolio Summary
  - User Detail
  - Theme Colour
    - Dark Theme
    - Light Theme
  - Sign out
- Each option will be opened a different tab, you can either:
  - Open in the new window
  - Maximise the tab
  - Close the tab



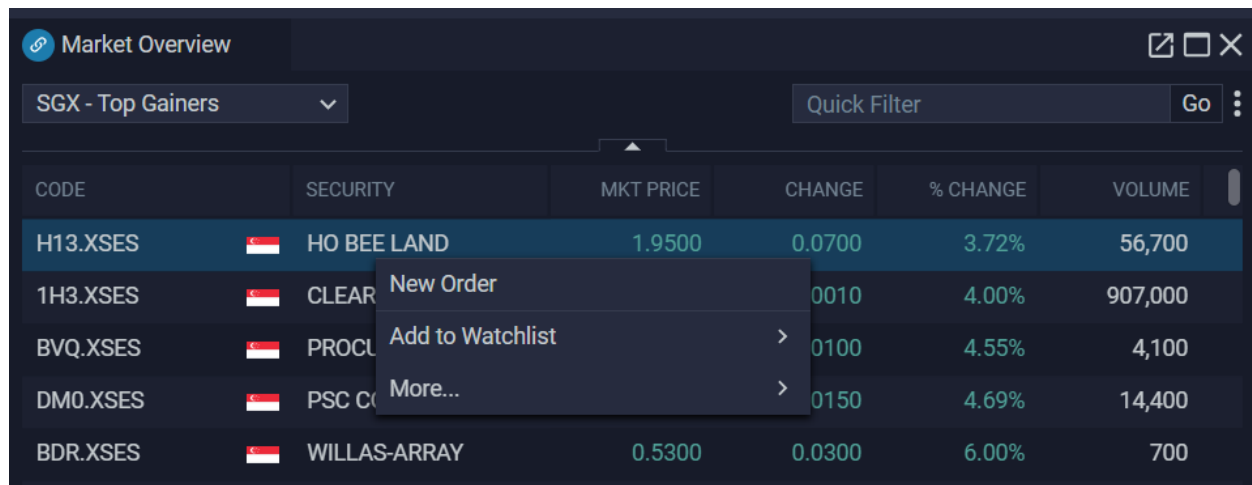


### 3. Account Set up

- Account based currency: USD
- Each trade will be imposed with a commission fee of 5 USD
- FX rate will be imposed on all the trades

### 4. Market Overview

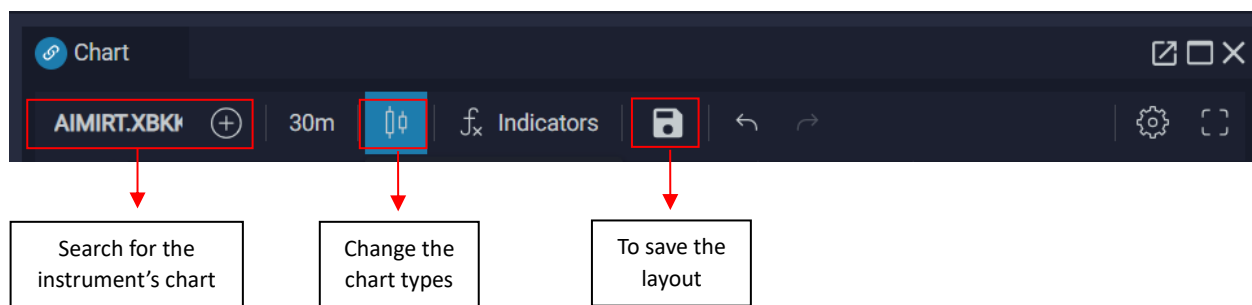
- Directory: Market Analysis > Market Overview
- You will be able to view the Top Gainers list in respective markets (SGX, IDX, BURSA, SET and PSE).
- The lists of stocks on the platform are not everything. Please refer to respective exchange websites to find full list.
- The list will be refreshed in real time.
- By right-clicking on the instrument, you can:
  - New Order
  - Add to Watchlist



CODE	SECURITY	MKT PRICE	CHANGE	% CHANGE	VOLUME
H13.XSES	HO BEE LAND	1.9500	0.0700	3.72%	56,700
1H3.XSES	CLEAR	0.0010	0.0010	4.00%	907,000
BVQ.XSES	PROCL	0.0100	0.0100	4.55%	4,100
DM0.XSES	PSC C	0.0150	0.0150	4.69%	14,400
BDR.XSES	WILLAS-ARRAY	0.5300	0.0300	6.00%	700

### 5. Charts

- Directory: Market Analysis > Market Overview
- Data is available from 1<sup>st</sup> March 2025 till date. For complete chart for the respective instruments, do make reference to **Yahoo Finance** <https://sg.finance.yahoo.com/> or **Trading View** <https://www.tradingview.com/>



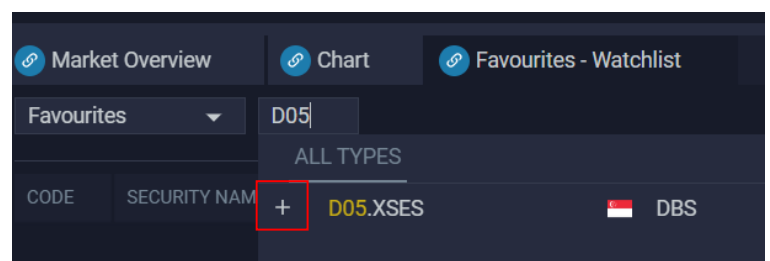
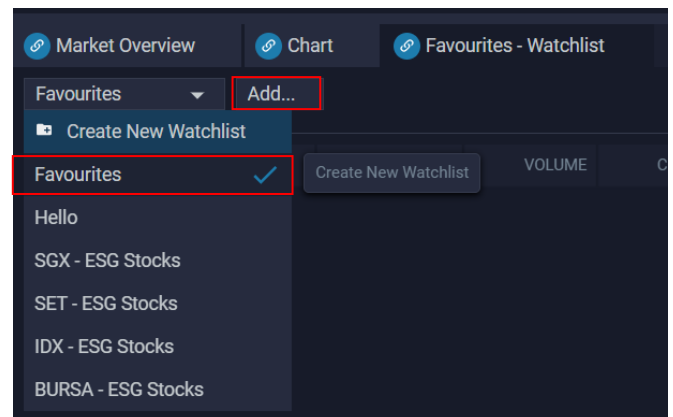
## Setting Price Alert

- Using Trading View, you can set to receive notification for preferred price level.



## 6. Watchlist

- Directory: Trading > Watchlist
  - 4 default watchlists containing the ESG Stocks in respective exchanges.
    - SGX – ESG Stocks
    - SET – ESG Stocks
    - IDX – ESG Stocks
    - BURSA – ESG Stocks
  - To create new watchlist, click on the dropdown list and select 'Create New Watchlist'
  - To add instruments in the watchlist, search for the instruments at 'Add..'
- 
- Add instruments to the preferred watchlist by 2 ways:
    - By clicking on the '+' icon
    - Right click on the instrument at other page, select 'Add to Watchlist' and the preferred watchlist to be added to.





## 7. Market hours

- SGX: 9am – 12pm; 1pm – 5pm (GMT+8)
- BURSA: 9am – 1230pm; 230pm – 5pm (GMT+8)
- SET: 10am -12.30pm; 2.00pm – 4.30pm (GMT+7)
- IDX: 9am - 12pm; 1.30pm - 4pm (Monday - Thursday)  
9am – 11.30am; 2pm - 4pm (Friday) (GMT+7)
- PSE: 9.30am – 12pm; 1pm – 2.45pm (GMT+8)
- NASDAQ: 9:30 am – 4:00 pm (GMT-4)

## 8. Where to find stocks?

- Via search function in the Market Overview tab
- Via trade ticket
- Via search function at Chart tab

New Order

IC23-TH-SIRU-20230805 (CGSI\_00000323)

Trading Balance\$99,859.36 USD

Search Symbol

– (–%)

Side

BUYSELL

Order Type

Limit

Quantity

0

Limit Price

0.0000

Duration

–

REVIEW ORDER

## Thailand stocks (SET)\*

SET offers different types of shares for local and foreign investors which are summarized as following:

- 1. Local Shares:** Both local and foreign investors can trade local shares, but foreign investors are not entitled to dividends and voting rights.
- 2. Foreign shares** (stock symbols with suffix “-F”): SET has established a foreign trading board where foreign investors can register their investment holdings and be eligible for the same benefits as local investors. Most SET-listed Thai companies have foreign ownership restrictions. The information on the foreign ownership restrictions in respect to each individual stock is available on SET’s website:

<https://www.set.or.th/en/market/get-quote/stock/>

- 3. Non-Voting Depository Receipt (NVDR)** (stock symbols with suffix “-R”): SET created Non-Voting Depository Receipts (NVDRs) to stimulate trading activity and to help eliminate barriers of foreign holding limits. NVDRs automatically carry the same prices and financial benefits as their underlying securities; the only difference is that NVDR holders do not have voting rights. Information on NVDRs is available at: <http://www.set.or.th/nvdr/en/faqs/faqs.html>

**\*Please consider these situations before making an investment:**

- *This challenge will not provide foreign participants the rights (e.g. voting and dividends) as real investors.*
- *For NVDR (“-R”), the price as well as bid/offer Qty are the same as its local stock; while Foreign shares (“-F”), the price as well as bid/offer Qty are different from its local stock as it is only traded among foreign investors (e.g. the price might be higher, while the volume is lower).*

## 9. Place order

- Directory: Menu > New Order
- You also can place order by right click on the instrument and select 'New Order'
- Order type offered:
  - Limit: Unfilled order will be expired at the end of the day.
  - Market
- All orders are in USD
- Commission: 5 USD per transaction
- FX Rate is a board rate provided by our internal house team. Do take note and review before placing order.
- Quantity to be in multiple of board lot, depending on the instruments
  - Error message will prompt when the above is not followed.
- Order can be amended anytime when it is pending to be executed.
  - Quantity
  - Price

New Order

IC23-TH-SIRU-20230805 (CGSI\_00000323)

Trading Balance

\$0.00 USD

Available balance for you to trade

Search for the instrument

POLARIS

5BI.XSES

0.0020 (+100.00%)

Market price of the selected instrument

To select if you want to buy or sell

Side

BUYSELL

To select order type: Market or Limit

Order Type

Limit

To indicate the quantity that you would like to buy or sell

Quantity

100

To indicate the price when you select order type as Limit

Limit Price

0.0020

No action required

Duration

Day Only

Summary

Order Amount

\$0.15 USD

Estimated Fees

\$5.00 USD

FX Rate

1.3575

FX Rate is provided by our internal house team

Estimated Total

\$5.15 USD

Total amount to be deducted from your trading balance

REVIEW ORDER

Show All

## 10. Stop-Loss

- Directory: Menu > New Order > Sell
- You can place a stoploss order for existing holdings of the instruments that you have.
- Stop-Loss duration is Good-Till-Cancelled (GTC)
- Trigger options
  - By Price
    - It will be triggered when ASK price hits price specified.
  - By Percentage
    - It will be triggered after percentage drop based on the ASK price.

New Order

IC24-SG-CGSI

(CGSI\_00000427)

Available Shares

0 Share

MALAYAN BANKING BHD

MAYBANK.XKLS

10.6200 (-0.56%)

Side

BUY

SELL

Order Type

Stop-Loss

▼

Triggered By

Price

Percentage

Quantity

0

Trigger Percentage (%) ⓘ

0.00

Duration

GTC

▼

REVIEW ORDER

Show All

New Order

New Order

IC24-SG-CGSI(CGSI\_00000427)

Available Shares0 Share

MALAYAN BANKING BHD

MAYBANK.XKLS10.6200(-0.56%)

SideBUYSELL

Order TypeStop-Loss

Triggered ByPricePercentage

Quantity0

Trigger Price0.0000

DurationGTC

REVIEW ORDER

Show All

11. View orders

- Directory: Menu > Trading > Orders
- This is where you can view all the orders that you have placed, with its respective status.
  - New: Order has been placed and yet to be filled.
  - Filled: Order has been filled.
  - Cancelled: Order has been cancelled by user.
  - Expired: Order is no longer in effect.
  - Rejected: Order is rejected by the exchange.
- You can filter the order status by clicking on the menu on the right of the column

The screenshot shows the 'ITEMS' table with a 'STATUS' dropdown menu open. The menu options are: FILLED, ALL, NEW, FILLED, CANCELLED, REJECTED, and EXPIRED. The 'FILLED' option is highlighted in green. A red box highlights the 'STATUS' header and the 'FILLED' option.

## 12. Portfolio Summary

- Directory: Menu > Portfolio > Portfolio Summary
- You can view your overall portfolio value
  - Cash Balance – how much you have (excluding settled positions)
  - Transaction not booked – positions that are pending to be settled
  - Cash – actual amount you can use for trading
  - Value of Positions – Your holdings value
  - Account Value – Cash balance

Market Overview

Portfolio (Holdings)

Portfolio Summary

IC24-SG-CGSI-TangTayHwee (CGSL00000427)

Cash and Positions

Performance

Cash Balance

\$100,000.00 USD

% Unrealized Profit / Loss

-0.19%

> Transactions not Booked

-\$257.39 USD

Unrealized Profit / Loss

-\$0.47 USD

Cash

\$99,742.61 USD

% Realized Profit/Loss

0.00%

Value of Positions

\$251.92 USD

Realized Profit/Loss

\$0.00 USD

Account Value

\$99,994.53 USD

## 13. Portfolio Holdings

- Directory: Menu > Portfolio > Portfolio (Holdings)
- You can view your current portfolio holdings.
- Holdings are grouped by instruments level.
- You can see the breakdown of the holdings, by clicking on '>' icon beside the instrument.


Market Overview


Portfolio (Holdings)

IC24-SG-CGSI-TangTayHwee (CGSL00000427)

Quick Filter

Go

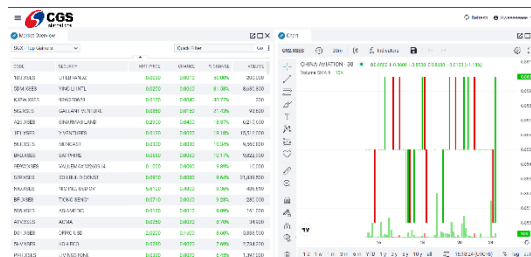
CODE	SECURITY	SIDE	QUANTITY	MKT PRICE	AVERAGE PRICE	BOOK VAL	BOOK VALUE (USER'S CURRENCY)	MARKET VAL	MARKET VALUE (USER'S CURRENCY)	TODAY P/L	TODAY
> MAYBANK.KK...	 MALAYAN BANKING BHD	BUY	100	10.6400	10.6600	1,066.00	252.39	1,064.00	251.92	-0.95	

CODE	SECURITY	SIDE	QUANTITY	MKT PRICE	AVERAGE PRICE	BOOK VAL	BOOK VALUE (USER'S CURRENCY)	MARKET VAL	MARKET VALUE (USER'S CURRENCY)	TODAY P/L	TODAY
✓ MAYBANK.KK...	 MALAYAN BANKING BHD	BUY	100	10.6400	10.6600	1,066.00	252.39	1,064.00	251.92	-0.95	
19 Sep 2024		BUY	100	-	10.6600						

## 14. Theme

- Directory: Menu > Theme Colour
- You can choose Light Theme or Dark Theme.

Market Overview										Quick Filter		Go		Chart	
IC24-SG-CGSI-TangTayHwee (CGSL00000427)															
CODE	SECURITY	SIDE	QUANTITY	MKT PRICE	AVERAGE PRICE	BOOK VAL	BOOK VALUE (USER'S CURRENCY)	MARKET VAL	MARKET VALUE (USER'S CURRENCY)	TODAY P/L	TODAY				
19 Sep 2024 ...		BUY	100		10.6600										
192.KS2	LEPTONQUEST										0.0000				
1204.KS2	YINLUOINTEL										0.0000				
61204.KS2	WINGTECH										0.0000				
161204.KS2	SHALLANT SYSTEMS										0.0000				
1204.KS2	SHANGHAI LAMP										0.0000				
121.KS2	YUNYANGS										0.0000				
16121.KS2	MEIGUANG										0.0000				
120121.KS2	SHANGHAI										0.0000				
120121.KS2	WANGSHENG RESOURCES										0.0000				
120121.KS2	WANGSHENG ENERGY										0.0000				
161201.KS2	NEO-NEO, NEO-TV										0.0000				
121.KS2	TONGSHI GROUP										0.0000				
1201.KS2	ATOMICWAVE										0.0000				
120120.KS2	ARMAN										0.0000				
1201.KS2	OPINUS										0.0000				
161201.KS2	ROCKWELL										0.0000				
161201.KS2	LEAPROTECH										0.0000				



## 15. Platform Support

- If you have any questions or enquiries, please reach out to the respective country support mailbox:

Singapore & Philippines: [csi.investmentchallenge@cgsi.com](mailto:csi.investmentchallenge@cgsi.com)

Malaysia: [investmentchallenge.my@cgsi.com](mailto:investmentchallenge.my@cgsi.com)

Indonesia: [investmentchallenge.id@cgsi.com](mailto:investmentchallenge.id@cgsi.com) | Whatsapp Only: +6287884641876 (Idil) / +6285785611939 (Talitha) / +6281280009969 (Olivia)

Thailand: [csth.investmentchallenge@cgsi.com](mailto:csth.investmentchallenge@cgsi.com) | Tel : 02-841-9033, 9012 | LINE OpenChat : [AIC LINE Open Chat](#)